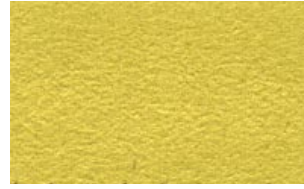




3941 Ivory



4473 Olive



4520 Lemon



5777 Graphite



3876 Bone



8231 Tabasco



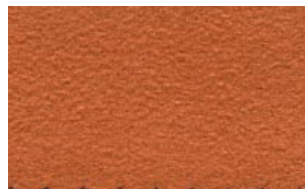
8233 Orange



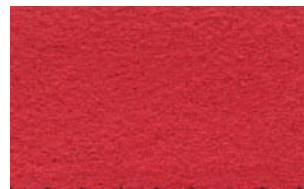
5776 Black



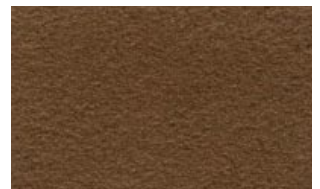
3871 Beige



8232 Clay



1378 Red



3879 Tobacco



3872 Sable



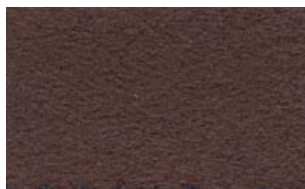
3874 Spice



4521 Sage



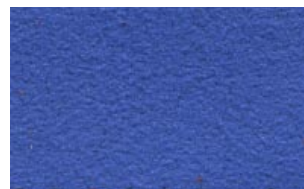
3873 Brown



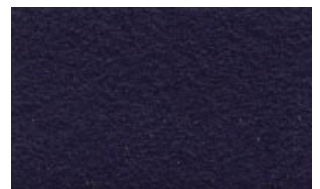
3875 Coffee



9412 Vineyard



2708 Royal



2670 Navy

ultrasuede.com



Style 505

8232 Clay

ULTRASUEDE® ELITE: INVINCIBLY ELEGANT

From the originators of the world's first ultra-microfiber suede fabric comes the most luxurious Ultrasuede® ever. But don't be fooled by its elegant good looks: Ultrasuede® Elite is engineered to be so strong, it's virtually indestructible.

- **Softest Ultrasuede® hand and feel yet**
- **Even more plush suede surface**
- **Stronger and more resilient than ever before**
- **Incredible resistance to tears**
- **Excellent colorfastness and resistance to crocking**
- **Superior resistance to discoloration at perspiration points thanks to advanced dyeing techniques**

For swatches, product information and new accounts, contact:

Toray Ultrasuede (America), Inc.
205 Lexington Avenue, 16th Fl.
New York, NY 10016
Tel: 212-576-3383
Fax: 212-576-3395
E-mail: fashion@ultrasuede.com

Orders for existing customers contact:

Customer Service Center
Tel: 800-633-8870
Fax: 803-835-8601/8602

ultrasuede.com

SPECIFICATIONS

Style: 505

Composition: 80% polyester ultra-microfiber, non-woven with 20% non-fibrous polyurethane binder

Width: 48"

Put up: 33 yd. R.O.T.

Thickness: 0.6mm

Weight: 7.7 oz. per square yard (±4%)

Fiber Fineness: 0.04d

CARE INSTRUCTIONS

Machine-washable in cold water, on delicate cycle, with like colors

Use mild detergent. Do not use bleach

Tumble dry or line dry

Can be steam ironed on low setting, with a press cloth

Please be aware that color migration may occur if dark-colored fabric is combined with white or light-colored fabric

Dry cleanable by conventional methods
